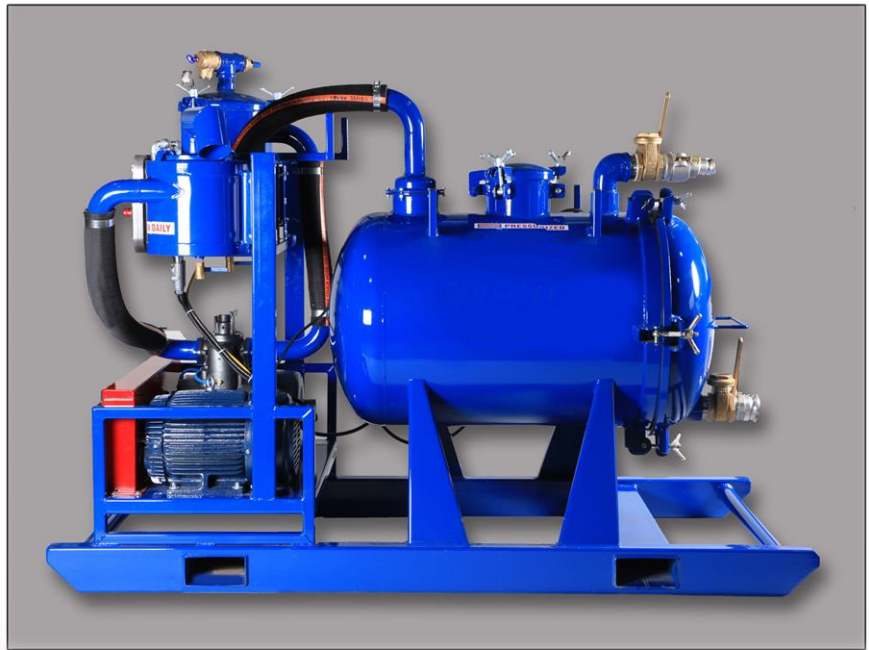




SVESK-150

150 U.S. Gallon
Skid Mount
Electric
Vacuum
Unit



Standard Vacuum Unit Package features include the following:

- Power pack c/w 15hp electric explosion proof w/ 480 V or 600 V 3ph
- Remote start station c/w 100' cord
- Low oil shutdown safety sensor
- 2" x 5' recovery wand
- 8" duckbill wand fitting c/w 2" camlock fitting
- 6" straight wand attachment c/w 2" camlock fitting
- 12" moisture trap
- 12" muffler & filter
- Pressure relief valve
- Vacuum breaker valve
- Pressure/vacuum gauge
- Full skid unit c/w forklift pockets
- Owner/operator manual
- One-year warranty

Options available:

- Electrical Class 1 Div 1
- Integrated pump flush system
- Integrated component drain system
- Collection & Discharge hose package
- Gasoline/Diesel powered



INNOVEX Group Ltd.

Specifications and Serial Numbers

Unit Serial _____ Vacuum Pump Serial _____

Electric Motor Type _____ Model _____ Serial _____

Customer Name _____ Date of Purchase _____

SVESK-150	
Pump	
Wallenstein	553 Oil Cooled Vane Pump
CFM	375
System Size	3"
Nominal Operating RPM	950
Discharge Pressure	10 - 12 PSI
Vacuum Continuous	20 (inches HG)
Vacuum Maximum	29 (inches HG)
Head Capability	15 - 20'
Hose Sizes	3" or 2" (Collection & Discharge)
Pulley Size	10.6" OD
Shaft Size	1 1/4" OD
Pump Oil	Hydraulic Oil (Non-Detergent)
Pump Oil Recommended	Summer 68 / Winter 32
Electric Motor	
Voltage	480 V or 600 V 3ph
Horsepower	15
Explosion Proof	Yes - Class 1, Div. 2
Amperage Draw	18
RPM	1760
Shaft Size	1 5/8" OD
Pulley Size	6" OD
Remote Start Station	Yes - w/100' cable
Tank	
Collection Tank Capacity	150 USG (568 L)
Tank Size	30" x 57"
Tank Material	Steel
Access	Full Opening End Door
Weight & Dimensions	
Approx. Weight	1895 lbs. (860 kg)
Dimensions	98" L x 44" W x 74" H
Paint	
Finish	Epoxy
Colour	Innovex Green

Pump Flush	Standard YES <input type="checkbox"/> NO <input type="checkbox"/>	Integrated system YES <input type="checkbox"/> NO <input type="checkbox"/>
Muffler Drain	Standard YES <input type="checkbox"/> NO <input type="checkbox"/>	Integrated system YES <input type="checkbox"/> NO <input type="checkbox"/>